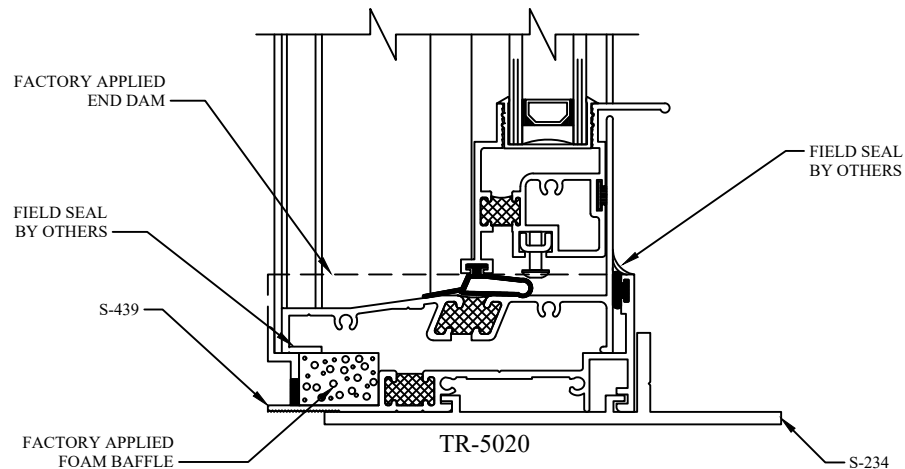


Installation

1. SUBSILLS ARE REQUIRED FOR WATER CONTROL IN OPENINGS WITH SIDE-BY-SIDE PRODUCTS, WHEN PANNING IS NOT USED.
2. PRODUCT SHOWN (TR-5020) IS FOR EXAMPLE ONLY -OTHER PRODUCTS CAN BE SUBSTITUTED.
3. DOTTED LINE INDICATES PROFILE OF FACTORY APPLIED AND SEALED END DAM.
4. ALL SUBSILLS ARE SUPPLIED WITH WEEP SLOTS (WITH FOAM BAFFLES AND NO WEEP HOLE COVERS) AND INTERIOR GASKET.
5. SPLICE JOINTS (OPENINGS OVER 21'-0" WIDE), SUPPORT, ANCHORAGE, AND CONNECTIONS TO EXTERIOR SILLS AND INTERIOR STOOLS SHOULD BE DETAILED IN CONSULTATION WITH KAWNEER ENGINEERING DEPARTMENT.

SUBSILL / CLIP INDEX

SUBSILL INDEX BY WINDOW FRAME DEPTH

Depth	Subsill	Page
2-1/4	S-1217	3
2-1/4	S-2617	3
2-1/4	S-2379	3
2-1/4	S-3305	6
2-1/4	S-3086	6
2-1/4	S-3203	6
2-1/4	S-3493	6
3-1/4	S-439	3
3-1/4	S-279	3
3-1/4	S-1371	4
3-1/4	S-1243	4
3-1/4	S-3076	4
3-1/4	S-1443	4
3-1/4	S-1978	4
3-1/4	S-1595	5
3-1/4	S-2088	5
3-1/4	S-2022	5
3-1/4	S-3010	7

Depth	Subsill	Page
3-1/4	S-3121	7
3-1/4	S-2321	7
4	S-764	3
4	S-3001	6
4-1/2	S-639	5
4-1/2	S-3078	6
4-5/8	S-2911	5

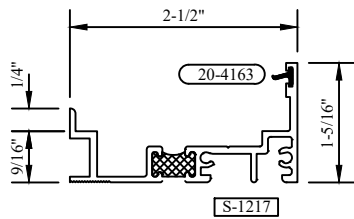
SUBSILL INDEX BY DIE

Subsill	Depth	Page
S-037		10
S-149		10
S-234		9
S-279	3-1/4	3
S-439	3-1/4	3
S-599		10
S-612	3-1/4	4
S-639	4-1/2	5
S-647		9
S-764	4	3
S-768		10
S-1208		9
S-1217	2-1/4	3
S-1242		9
S-1243	3-1/4	4
S-1249		10
S-1366		10
S-1369		9
S-1371	3-1/4	4
S-1443	3-1/4	4

Subsill	Depth	Page
S-1595	3-1/4	5
S-1978	3-1/4	4
S-2022	3-1/4	5
S-2088	3-1/4	5
S-2321	3-1/4	7
S-2374		10
S-2379	2-1/4	3
S-2617	2-1/4	3
S-2784		9
S-2911	4-5/8	5
S-3001	4	6
S-3010	3-1/4	7
S-3078	4-1/2	6
S-3086	2-1/4	6
S-3121	3-1/4	7
S-3203	2-1/4	6
S-3305	2-1/4	6
S-3493	2-1/4	6

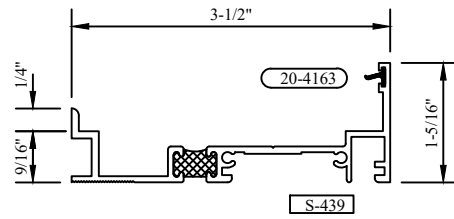
Half Scale Sections

FOR 2-1/4" SYSTEM



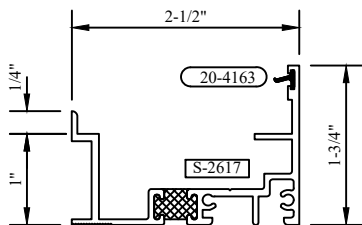
6.24 PSF SUBSILL
S-1217

FOR 3-1/4" SYSTEM



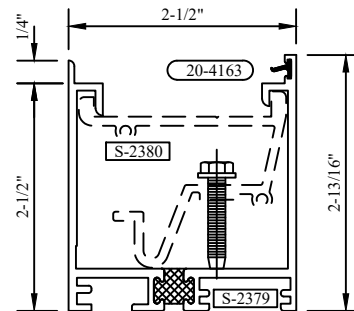
6.24 PSF SUBSILL
S-439

FOR 2-1/4" SYSTEM



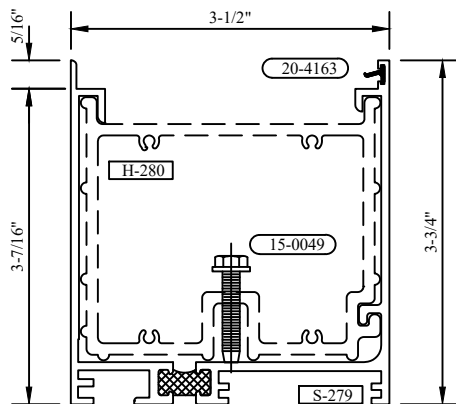
8 PSF SUBSILL
S-2617

FOR 2-1/4" SYSTEM



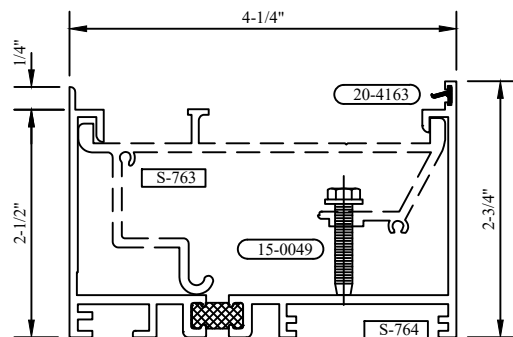
10 PSF SUBSILL
S-2379

FOR 3-1/4" SYSTEM



15 PSF SUBSILL
S-279

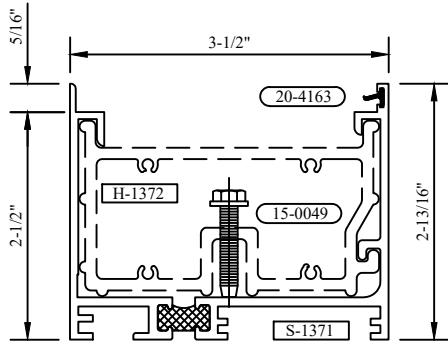
FOR 4" SYSTEM



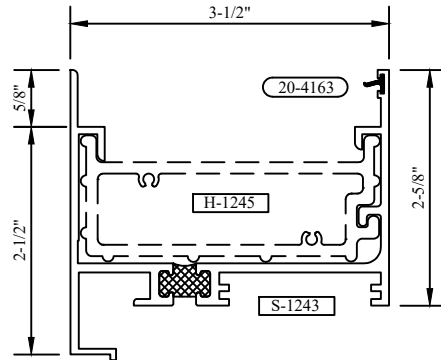
10 PSF SUBSILL
S-764

Half Scale Sections

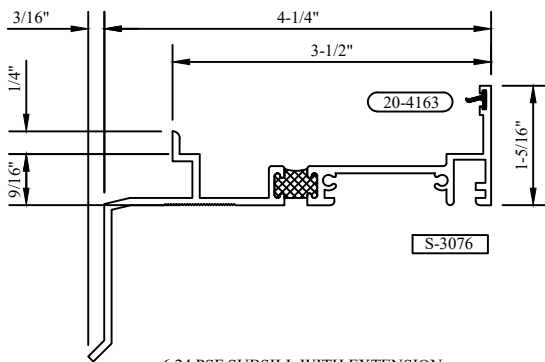
FOR 3-1/4" SYSTEM


10 PSF SUBSILL
S-1371

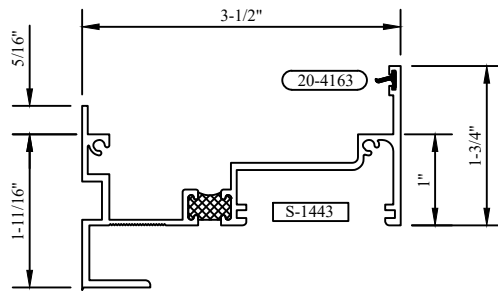
FOR 3-1/4" SYSTEM


10 PSF SUBSILL
S-1243

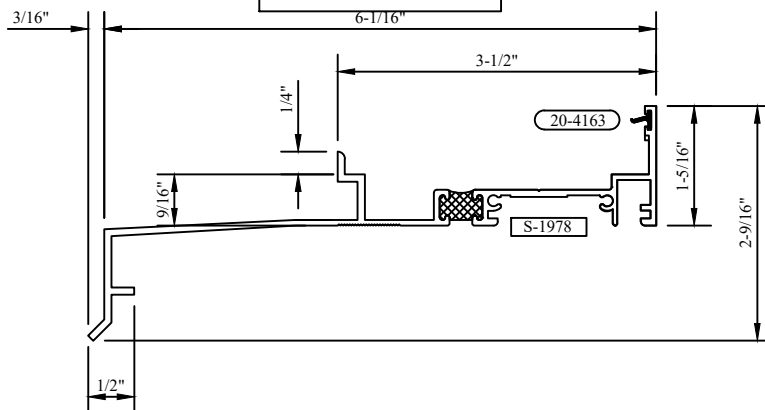
FOR 3-1/4" SYSTEM


6.24 PSF SUBSILL WITH EXTENSION
S-3076

FOR 3-1/4" SYSTEM

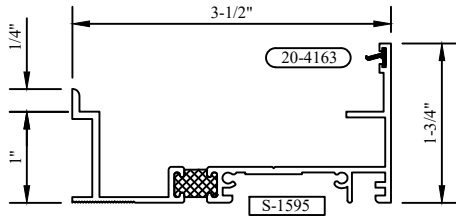

8 PSF SUBSILL
S-1443

FOR 3-1/4" SYSTEM

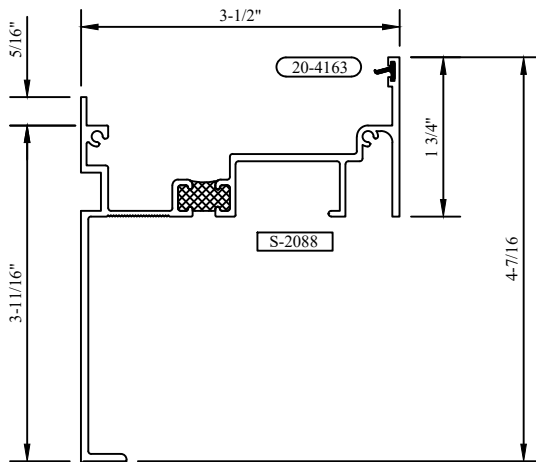

6.24 PSF SUBSILL
S-1978

Half Scale Sections

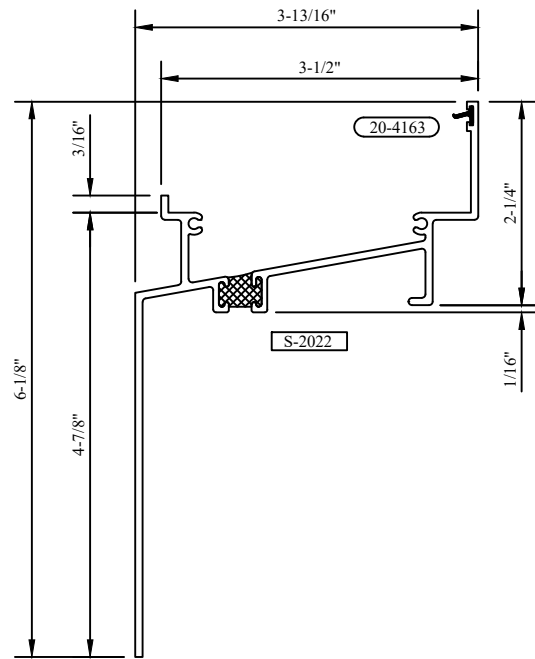
FOR 3-1/4" SYSTEM


8 PSF TRIM SUBSILL
S-1595

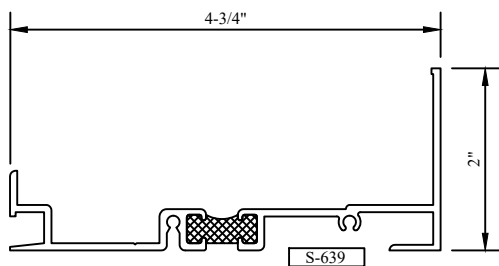
FOR 3-1/4" SYSTEM


8 PSF SUBSILL WITH FLANGE
S-2088

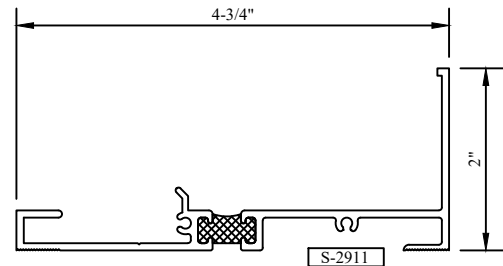
FOR 3-1/4" SYSTEM


6.24 PSF SUBSILL WITH FLANGE
S-2022

FOR 4-1/2" SYSTEM

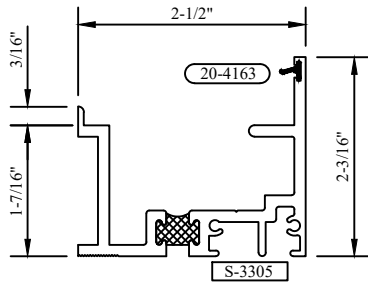

8 PSF SUBSILL
S-639

FOR TR-8300


10 PSF SUBSILL
S-2911

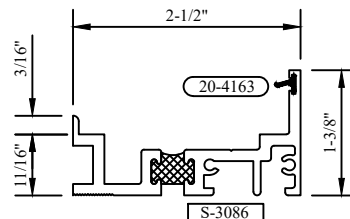
Half Scale Sections

FOR 2-1/4" SYSTEM



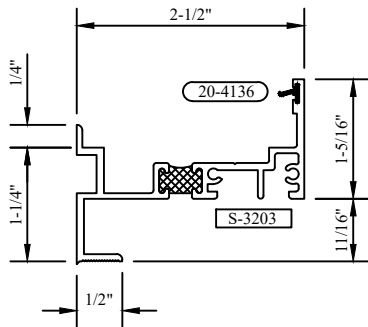
10 PSF SUBSILL
S-3305

FOR 2-1/4" SYSTEM



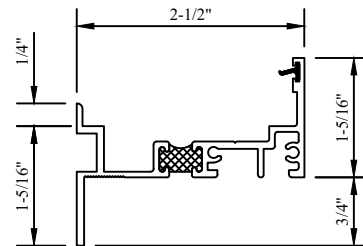
6.24 PSF SUBSILL
S-3086

FOR 2-1/4" SYSTEM



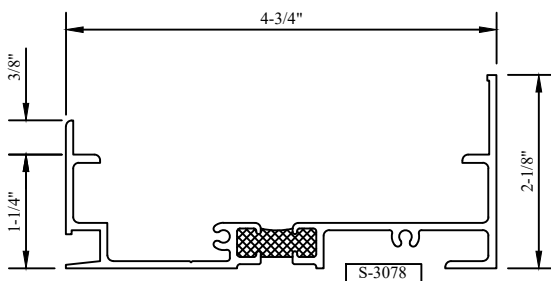
6.24 PSF SUBSILL WITH CAULKING LEG
S-3203

FOR 2-1/4" SYSTEM



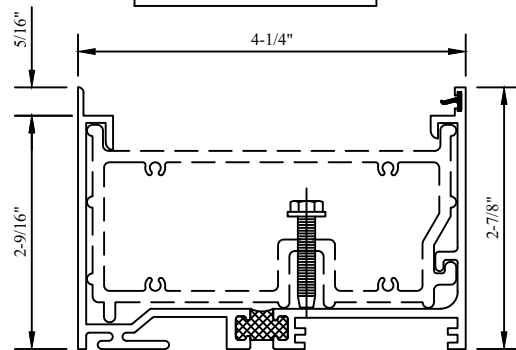
6.24 SUBSILL WITH LEG
S-3493

FOR TR-700



8 PSF SUBSILL
S-3078

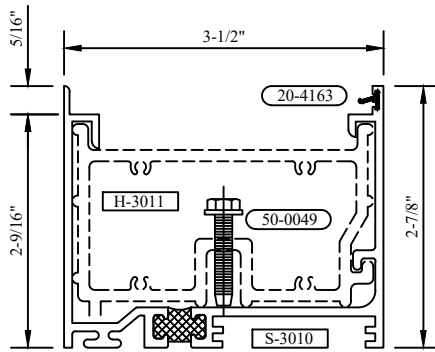
FOR 4" SYSTEM



12 PSF SUBSILL
S-3001

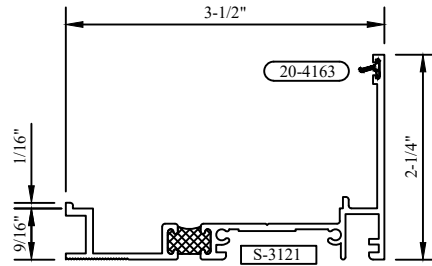
Half Scale Sections

FOR 3-1/4" SYSTEM



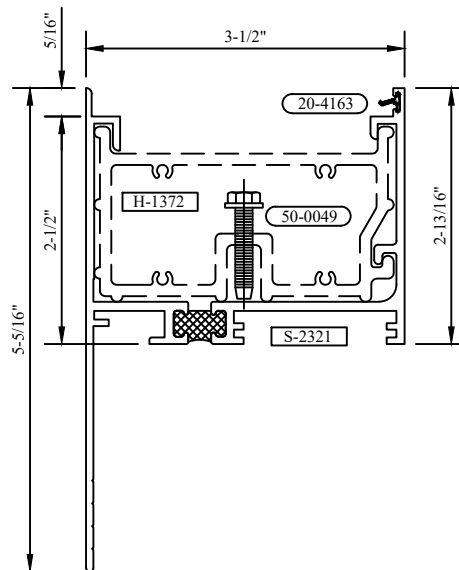
12 PSF SUBSILL
S-3010

FOR TR-6800



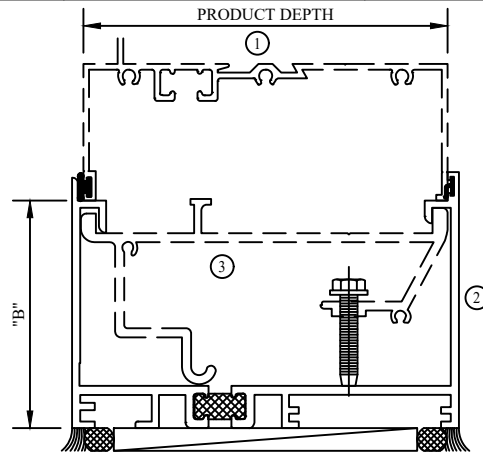
10 PSF SUBSILL (TR-6800 ONLY)
S-3121

FOR 3-1/4" SYSTEM



10 PSF SUBSILL WITH FLANGE
S-2321

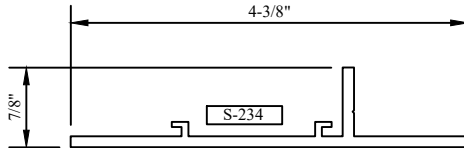
Half Scale Sections



NOTE: ALL SUBSILL INSERT CLIPS ARE 4" LONG

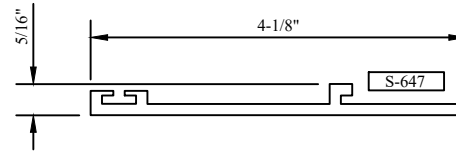
PRODUCT DEPTH ①	TYP. WALL THICKNESS	WATER TEST PRESSURE (PSF)	BASE ②		INSERT CLIP ③	'B' DIMENSION
			DIE NUMBER	GASKET NUMBER	DIE NUMBER	
2 1/4"	.062	6.25	S-1217	20-4163	N/A	9/16"
2 1/4"	.062	6.25	S-2617	20-4163	N/A	1"
2 1/4"	.080	10	S-2379	20-4163	S-2380	2 1/2"
3 1/4"	.062	6.25	S-439	20-4163	N/A	9/16"
3 1/4"	.062	8	S-1595	20-4163	N/A	1"
3 1/4"	.090	10	S-1371	20-4163	H-1372	2 1/2"
3 1/4"	.090	15	S-279	20-4163	H-280	3 7/16"
4"	.090	10	S-764	20-4163	S-763	2 1/2"
4 1/2"	.080	8	S-639	N/A	N/A	1/2"
4-1/2"	.080	8	S-3078	N/A	N/A	1-1/4"

Half Scale Sections



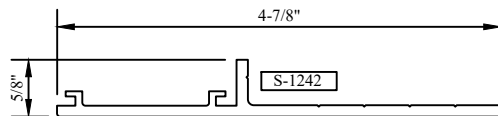
NOTE: SLIDE FITS WITH S-279, S-439, S-697, S-764, S-1243
S-1371, S-1595, S-1978, S-2064, S-2209

SUBSILL ANCHOR #2
S-234



NOTE: SLIDE FITS WITH TR-8500 &
TR-12000 SILL EXTENSIONS

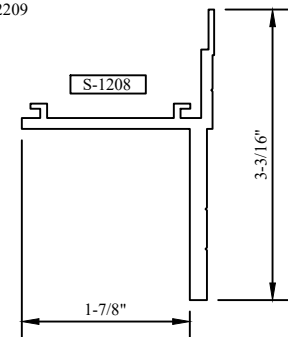
SUBSILL ANCHOR
S-647



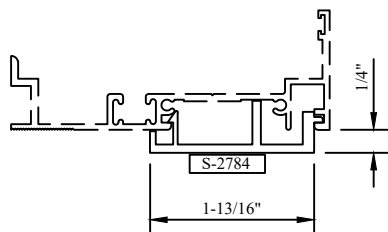
NOTE: SLIDE FITS WITH S-279, S-439, S-697, S-764, S-1243
S-1371, S-1595, S-1978, S-2064, S-2209

#6 SUBSILL ANCHOR
S-1242

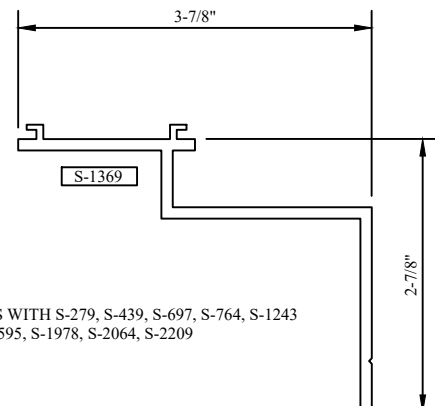
NOTE: SLIDE FITS WITH S-279, S-439, S-697, S-764, S-1243
S-1371, S-1595, S-1978, S-2064, S-2209



SUBSILL ANCHOR #6
S-1208



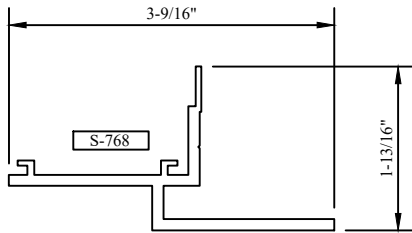
CUSTOM SNAP-ON CLIP
S-2784



NOTE: SLIDE FITS WITH S-279, S-439, S-697, S-764, S-1243
S-1371, S-1595, S-1978, S-2064, S-2209

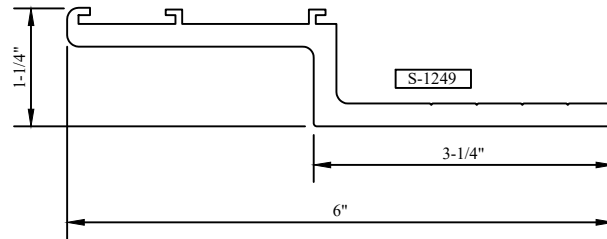
SUBSILL ANCHOR
S-1369

Half Scale Sections



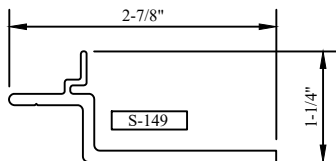
NOTE:
SLIDE FIT WITH S-279, S-439, S-697, S-764, S-1243
S-1371, S-1595, S-1978, S-2064, S-2209

SUBSILL ANCHOR
S-768



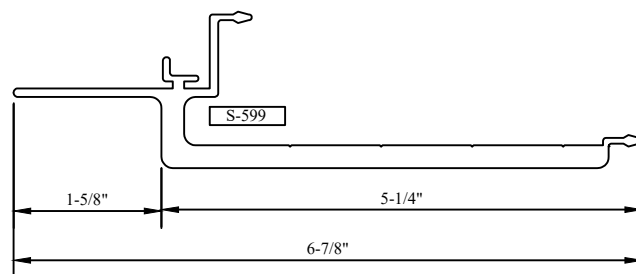
NOTE:
SLIDE FIT WITH S-279, S-1243, S-1371

#17 SUBSILL ANCHOR
S-1249

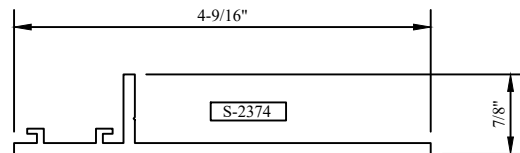


NOTE:
SLIDE FIT WITH S-279, S-439, S-697, S-764, S-1243
S-1371, S-1595, S-1978, S-2064, S-2209

SUBSILL ANCHOR
S-149

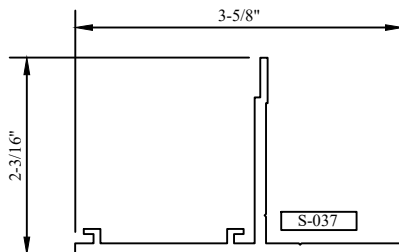


NOTE:
SLIDE FIT WITH S-612



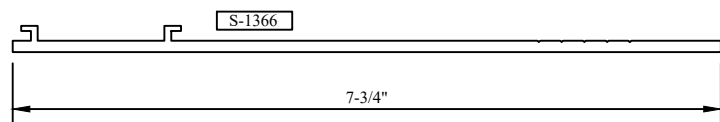
NOTE:
SLIDE FIT WITH S-2317, S-2379, S-2617

SUBSILL ANCHOR
S-2374



NOTE:
SLIDE FIT WITH S-279, S-439, S-697, S-764, S-1243
S-1371, S-1595, S-1978, S-2064, S-2209

SUBSILL ANCHOR #1
S-037



NOTE:
SLIDE FIT WITH S-279, S-439, S-697, S-764, S-1243
S-1371, S-1595, S-1978, S-2064, S-2209

SUBSILL ANCHOR
S-1366